



The **Comiskey Group** entrusted **Follow** with designing and launching the online presence for their strategically important venues, **Sandstone Point Hotel** and **Holiday Resort** and the **Eatons Hill Hotel**.





As winner of Queensland's Best Entertainment Venue award and QHA's Best New Hotel and Best Overall Hotel, it was essential Sandstone Point's online presence reflected its achievements arising from the expert development and a significant \$30M investment made in the venue. With an extraordinary offering, there was a joint focus on the importance of an impressive and rewarding online experience.

Follow helped Sandstone Point define its key online target markets, and construct the messaging required for this diverse dining and entertainment offering. By exposing and promoting the entertainment, functions, destination venue and dining experiences available (and most recently, adding accommodation options) Follow was able to communicate the unique proposition delivered by this amazing leisure and hospitality destination.



Our menus are influenced by the fresh seafood available locally, and complimented with a variety of options including premium steaks, wood fired pizzas, & mouth watering burgers. Dine inside or enjoy the view Alfresco. Check out our current menus below:

[Lunch & Dinner](#)
[Bar Menu](#)
[Cafe Menu](#)

RESTAURANT HOURS

Lunch
 Monday to Thursday 11.30am – 2.30pm
 Friday 11.30am – 3pm
Dinner
 Monday to Thursday 5.30pm – 9pm
 Friday 5.30pm – 9pm
Weekends All Day Dining
 Saturday 11am – 9.30pm



HISTORY

In 1875, James Clark operated a very successful Oyster Farm out of Pamicestone Passage. During its peak in the 1900's, he owned over 30 dredging sections and employed over 25 families all working in the area, which was unheard of at the time!

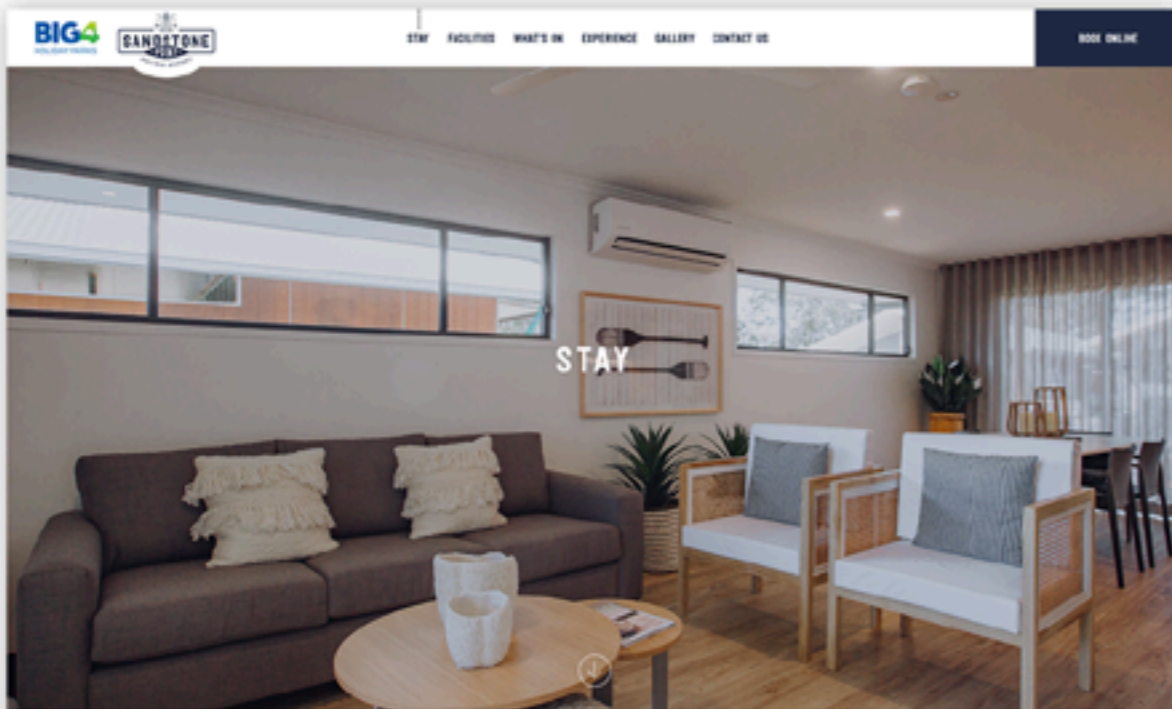
THE OYSTER SHED TODAY

Pamicestone Passage was very important to the livelihood of Moreson Bay, with the jetty and oyster shed playing a big part in day to day life.

Now restored, the jetty and oyster shed are back in operation and the Oyster Shed Fish and Chippery takes on the same legendary standards in producing fresh, local seafood – just as the Oyster King intended.

Long Live the Oyster King

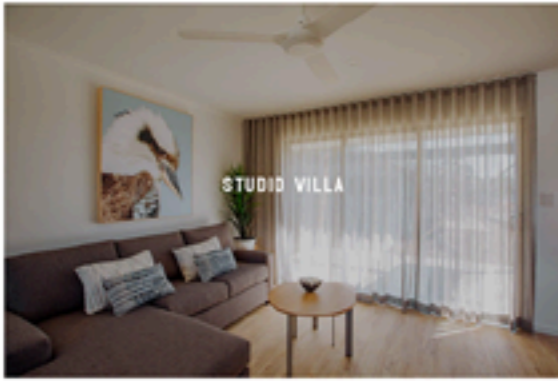




THE MORETON BAY REGION'S NEWEST ACCOMMODATION

Located on the shores of Pumicestone Passage, 2024 Sandstone Point Holiday Resort is the Moreton Bay Region's newest accommodation! Offering a range of family friendly facilities and a variety of accommodation options, we have something for everyone. If you're after superb facilities and gorgeous natural surroundings just a stone's throw away from the beach, look no further.

[Book Now](#)



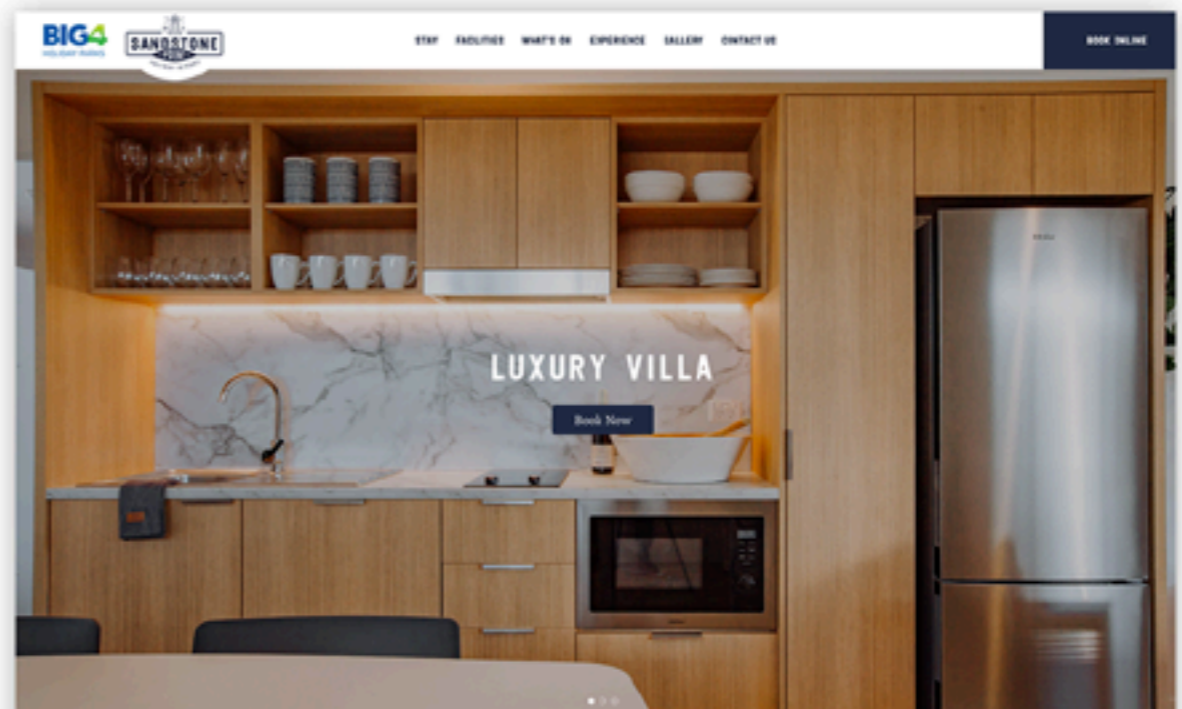
BEST AVAILABLE RATES - CONTACT US TODAY

[Contact us](#)

OFFERS AND PACKAGES

BE THE FIRST TO KNOW OF SPECIAL ACCOMMODATION RATES & PACKAGES

BIG4 SANDSTONE 071 3410 8712
1800 Bitter Island Road, Sandstone Point



LUXURY VILLA

The Luxury Villa is stunningly appointed and perfect for a wedding night or couple's getaway. Step into The Luxury Villa and be wowed by your very own King bed on a four post platform. Showcasing coast inspired decor and combining resort style living with luxury, this villa is not to be overlooked for a two person stay. Complete with gorgeous views of the Pumicestone Passage, you'll see a slice of Moreton Bay's most scenic waterway right from your doorway. Featuring our King bed on a platform as well as a large ensuite bathroom which includes double vanity with toilet, a spa bath and shower. The Luxury Villa also has its very own kitchen, dining and living area with a Smart TV. All this opening out to a private alfresco dining area with a BBQ, perfect for romantic outdoor meals with a view. Spend a few nights in this tranquil setting with your loved one indulging in food, wine and luxury.

[Book Now](#)

Include Free

- Free WiFi
- Free TV
- Private BBQ
- Allowed Car Park
- Private BBQ

Amenities

- One King bed on platform
- Ensuite with large gas bath, twin sink & shower
- Open plan kitchen, dining and living area
- Private alfresco dining with BBQ
- Masterpiece
- TV

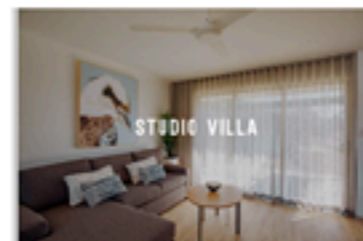
Rates Plans

[Download PDF](#)



66m² ROOM SIZE
1 BATHROOM
2 NO. OF PEOPLE

MORE ROOM OPTIONS



FACILITIES



JUMPING PILLOW

Slip on over to our vibrant jumping pillow, a fun way for your kids to jump into 'hollidays mode'! Our jumping pillow is currently under construction, just you wait until we show you the real thing!



KIDS WATER PARK

Slip, slip, slip and slide into our waterpark! Your kids won't say they're long with water slides and our giant 800L/1700Lipping bucket! Real images to come soon, our water park is currently under construction!

Please note:
- Wheelchairs must be worn at all times during your stay to access our incredible facilities.
- There is no lifeguard on duty and adult supervision is required at all times.



TENNIS COURT

Are you the next 'Pat Rafter'? Find out on the tennis court! Grab a racket and go head to head!



Dining at Sandstone Point Hotel

Enjoy Sandstone Point Hotel's seasonal driven menu of fresh, local produce with clever combinations that will leave you wanting more. Dine in their beautifully appointed restaurant and enjoy a variety of options including premium steaks, wood fired pizzas, pasta dishes & mouth-watering

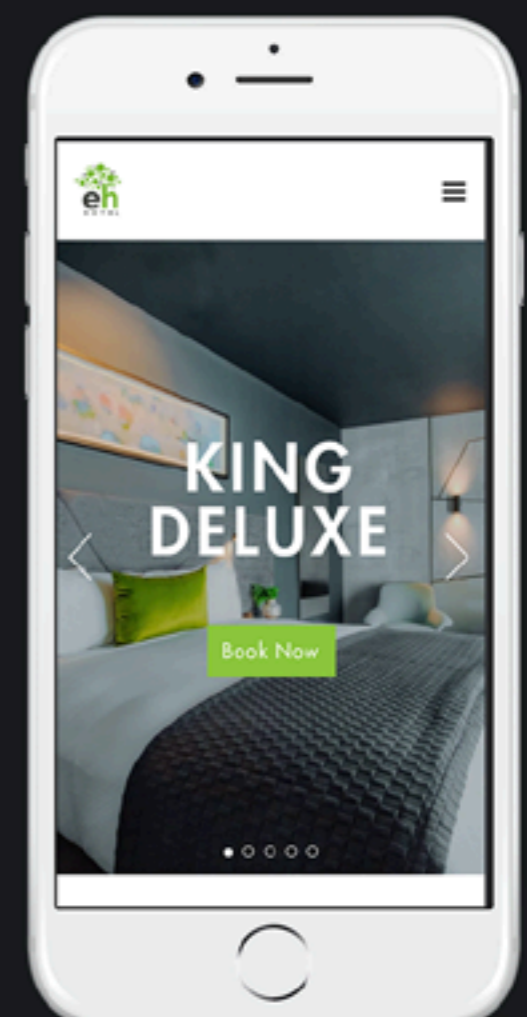
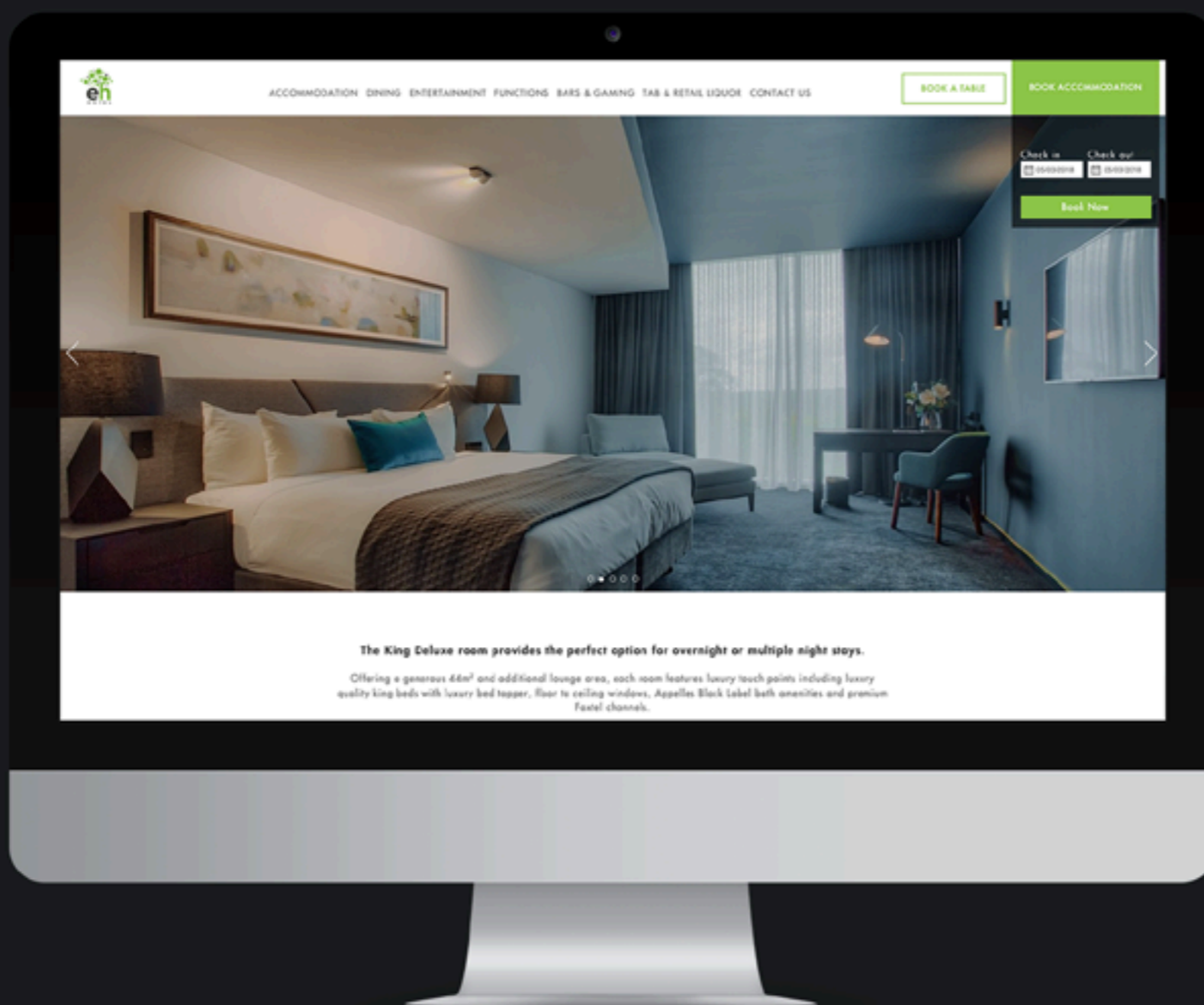


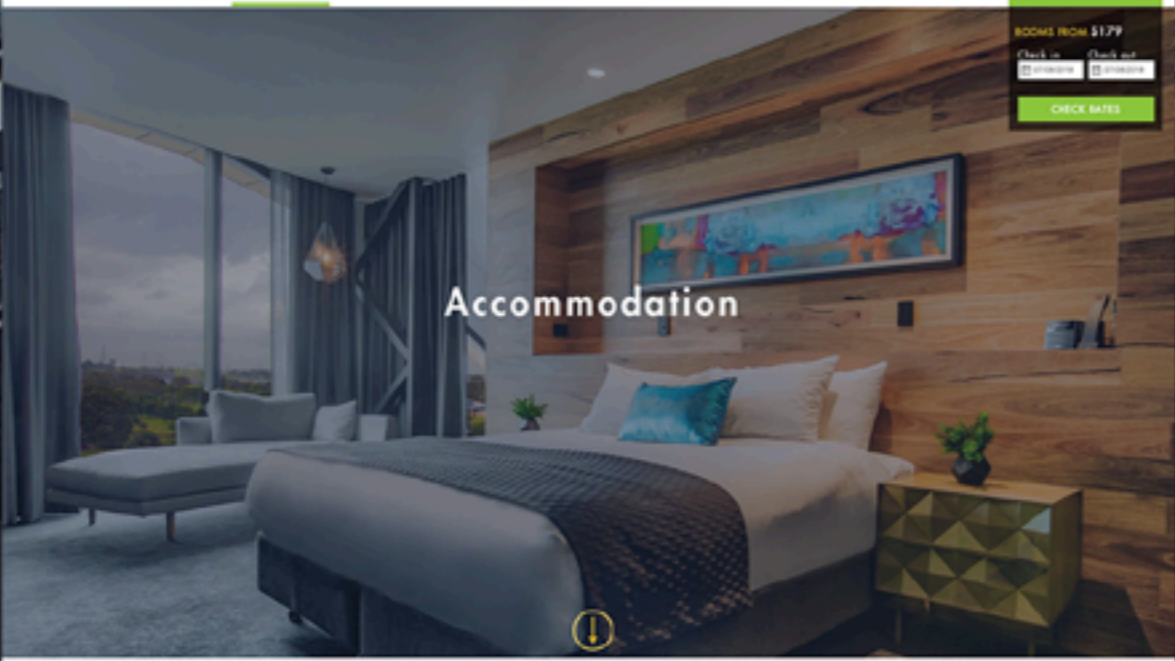
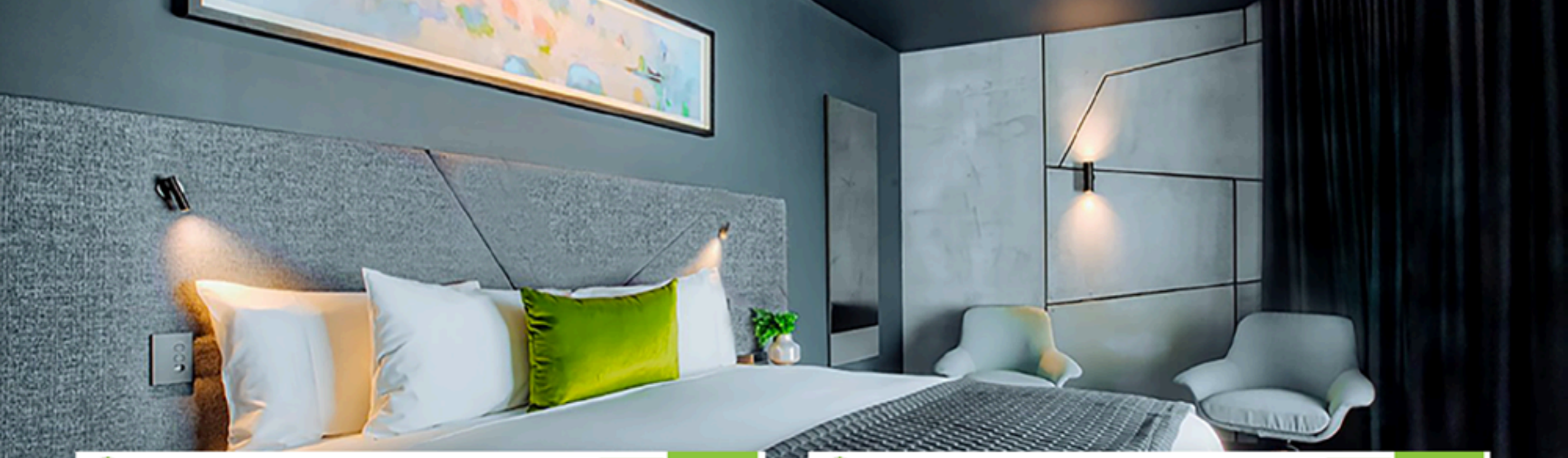
eatonshill
HOTEL

Tasked with redefining Brisbane's entertainment experiences, the Eatonshill Hotel launched as an adventurous suburban hospitality offering, with a major and ambitious investment on Brisbane's northside.

While difficult to fully comprehend the outstanding achievements of these visionary developers in a previously under-visited region, it was very clear the venue's online presence needed to be equally impressive.

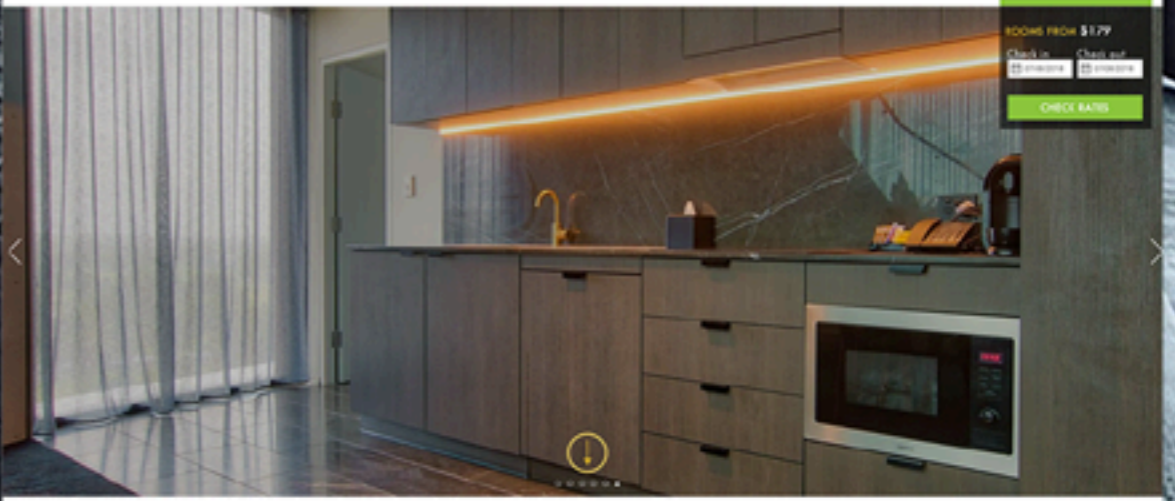
Working closely with the client, and clarifying the goals and objectives for the venture, Follow design and developed a multi-faceted site promoting the huge range of events, functions, accommodation, dining and leisure experiences available at this outstanding suburban venue.





Accommodation

ROOMS FROM \$179
 Check in: Check out:
[CHECK RATES](#)



ROOMS FROM \$179
 Check in: Check out:
[CHECK RATES](#)

The signature Sky Penthouse suites provides the perfect option for special occasions and is suitable for long stay guests



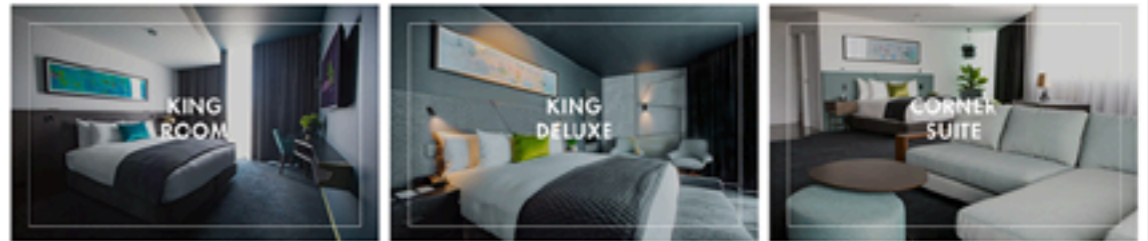
Situated on levels 4 & 5, the Sky Penthouse incorporates 2 king bedrooms with ensuite & linenroom facilities. Designed for the 100% special occasion in mind and providing 150m² across split levels, these rooms have expansive floor to ceiling windows, and panoramic views. These rooms have the capacity to accommodate a family providing a king and two room.

[Book Now](#)

- | | | | |
|----------------------|------------------|---|---------------------------------------|
| Included Plus | Amenities | 2 King Beds | 2 Bedrooms |
| Free WiFi | Secure Parking | 2 x 65" Philips Media Suite TV | 1 x 65" Philips Media Suite TV |
| Fossil Premium | Domestic Calls | Luxury Bed Linen | Panasonic Fossil Channels |
| | | Tea & coffee making facilities | Coffee Machine |
| | | Deep Soaking Bath | Wine/Cellar |

Room Size: **150m²** | Beds: **2 King Beds** | No. of People: **4**

More Room Options



Hotel Facilities



Gym & Pool Situated on the lower ground near the hotel the hotel's gymnasium and heated pool provide the perfect way to start or finish the day. Open 6:00am - 11:00pm, access is limited to hotel guests only.

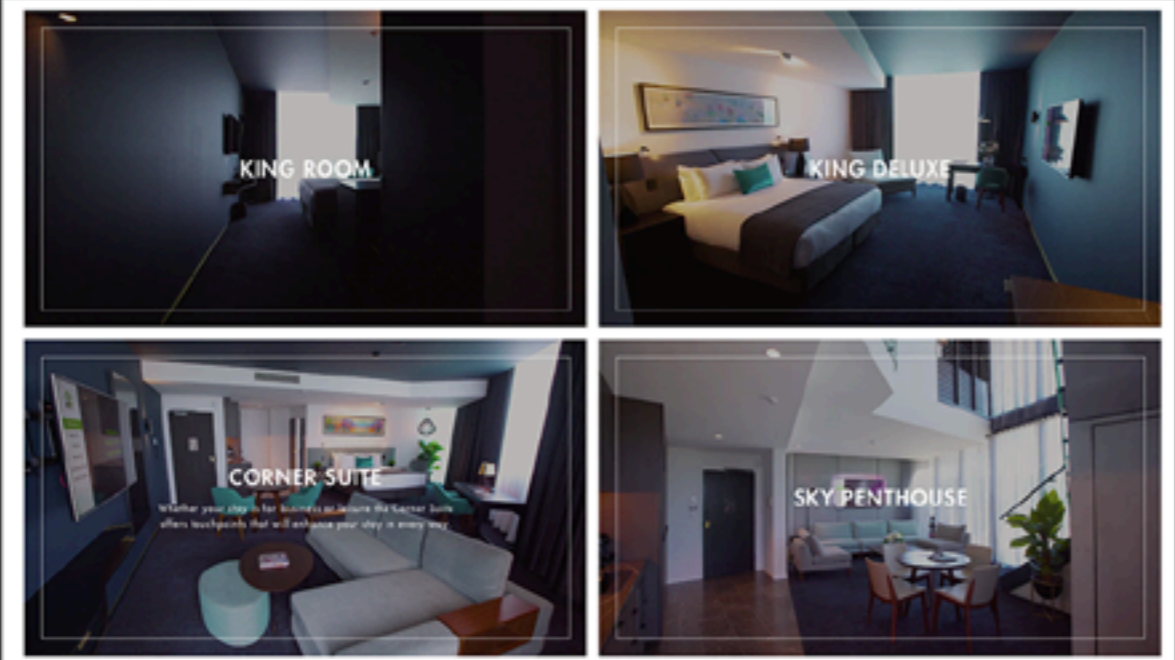
Breakfast Restaurant Serving breakfast 7 days a week from 6:30am - 9:00am Monday - Friday and 6:30am - 11:00am Saturday & Sunday, the hotel restaurant overlooks the Green and offers a continental buffet and a la carte options.

Massage Available to be completed in your room, outside or within a therapy room our selection of therapeutic Massage can be booked by contacting our Guest Services team.

- Other Hotel facilities include:
- 24hr Reception
 - Bar & Lounge
 - Conference & Boardroom facilities
 - Restaurant
 - Complimentary high speed wifi throughout the hotel

SKY PENTHOUSE

[Book Now](#)



Best Available Rates - Contact Us Today

Estates Hill Hotel Accommodation is a short 20 minutes from Brisbane airport and the CBD, and is adjacent to Brisbane, one of the largest industrial estates in Queensland, and popular tourist locations - Sandford and Doylans. Stay only 15 minutes from Brisbane Entertainment Centre.

Servicing Areas: Brendale - Albany Creek - Estates Hill - Sandford - Doylans - Warner - Coopers - Sandhill - Chermide

Nearby: Albany Creek Memorial Park, Pioneer Cemetery & Crematorium, Northcott Private Hospital, Prince Charles Hospital, Lawton Cemetery, Toowoomba, Olgarville Historic Estate and Sandstone Point Hotel.

Accessible rooms are available and designed for comfortable wheelchair access including bathroom features to allow easy shower access.

Read More - <http://indulgemagazine.net/estates-hill-hotel/>

[Contact Us](#)

